

March 2008

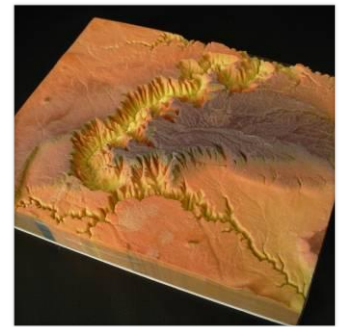
CERAM



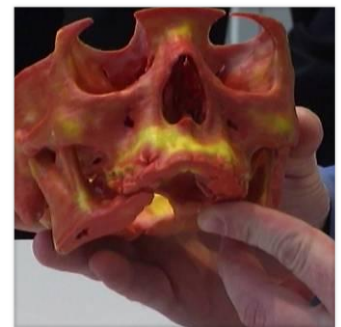
Computer games figures produced in Ceramic using 3D printing technology



Gazebo design for RM manufacture using the Ceramic Monolite process



3D Printed ceramic Giftware generated using on-line data



Ceramic RM part showing osteoporosis-bone used for maxiofacial teaching

Rapid Manufacturing for the production of Ceramic Components

Foreword

This report has been written at the request of the ceramics research institute CERAM of Stone-on-Trent UK.

The report provides an overview of the current state-of-the-art in the manufacture of ceramic component parts made using Additive Layer Manufacturing (ALM) technologies, as of March 2008.

More specifically, the report discusses the potential business benefits of manufacturing 'end-use' component parts using ALM technologies in an application know as 'Rapid Manufacturing'. The report looks at the current ALM processes capable of producing ceramics parts and looks at some of the current ceramic RM applications. The report also provides some insight into the future of ceramic RM by looking at a range of university research projects.

As the report will demonstrate ceramic RM remains in its infancy. However, it also highlights some of the future commercial opportunities for both ceramic materials developers and ceramic product manufacturers.

THE FULL 40-PAGE REPORT CAN BE OBTAINED BY CONTACTING

DAVE CARTLIDGE
Senior Technologist
CERAM
Queens Road
Penkhull
Stoke on Trent
Staffordshire
ST4 7LQ

0178 764237

Dave.carrlidge@ceram.com